

Preferred Client

NO. 8 2007

update

working hard to keep you informed

Bill Albers

Realtor

Call Today

250-374-3331

E-mail: billalbers@remax.net



RE/MAX[®]

Real Estate (Kamloops)



grass is greener than some think

For those interested in creating a more natural looking environment, traditional green lawns provide an obvious starting point. Grass or turf remains one of North America's most common forms of landscaping enhancement, and a significant agricultural crop. Turf offers many of the same properties as most other natural and porous groundcover, but also provides accessibility and aesthetics that others cannot. If you have ever visited a public park, you already know the benefits of a healthy green lawn. And if you play outdoor sports, you know the cushioning effects that natural turf provides, compared to synthetic surfaces. In addition, lawns create oxygen, absorb and retain a great deal of moisture (and return some to us, helping to cool our environment), while also keeping a firm grip on soil to prevent damaging run-off and erosion. The fact is that the grass on private lawns, public parklands, corporate properties and institutional grounds have long contributed to an ecological counterbalance against concrete and pavement proliferation. It also offers a most welcome respite to the hustle and bustle of modern urban and suburban life.



The cultivation of herbs in flowerpots, planters and windowsill boxes is a growing trend on balconies and decks across the country. This form of gardening is easy, economical and interesting. It is simple enough for young children to participate, yet rewarding enough for sophisticated chefs to become absolutely devoted. Visit your local garden center or go online to a reputable seed distributor, and you'll be growing natural, fresh herbs that can be harvested for your dinner table in a matter of weeks. All you have to do is pick your plants or herbs, make sure your sun exposure is appropriate for your plant's growth, and provide the necessary minimal care. It's that easy.

Think, Act...Live!

"Small opportunities are often the beginning of great enterprises."

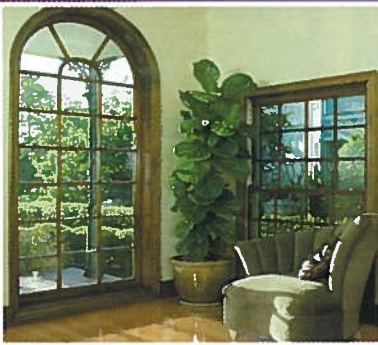
Demosthenes

"Genius is the ability to put into effect what is in your mind."

F. Scott Fitzgerald

"You may have to fight a battle more than once to win it."

Margaret Thatcher



Window security matters

While most homeowners know that security is an important aspect of comfortable family

living, many are not aware of the many security options that are available. For example, a solid well-built window system with double-pane glass, window locks and deadbolts provides merely “entry level” window security for the average homeowner. Nowadays, the protection of family and property requires a better understanding of the risks, and a greater awareness of the options available to reduce those risks. Here are a few of the options you may want to consider in order to improve your window security.

Physical Barriers

Short of installing solid shutters, the most logical way to protect a window from damage or unlawful entry is by installing heavy bars. But, don't imagine that the kind of bars you see protecting pawnshops or jewelers' windows will be protecting your home. Instead, imagine beautiful European-style crafted metal. Decorative wrought iron provides a reliable barrier to unwanted entry, and is now widely available in fashionable styles. This type of barrier is ideal for basement and upper floor windows. However, iron bars can be impractical if entry and/or exit is required. For passageways, steel frames and bars with a “quick-exit” release option might be the better choice. These provide a step up from fixed bars, offer the same security, but have a lock and hinge arrangement for easy passage.

Imbedded Glass Panels

Imbedded glass has material that is added during the manufacturing stage to provide added security or safety enhancement. It can range in thickness from light to heavy gauge glass. One type of imbedded glass is traditional reinforced wired glass which is designed to

prevent glass from dispersing in case of impact or fire. However, it doesn't necessarily contribute to the glass pane's resistance to breakage. Also, because it is often somewhat opaque, its application may be limited due to vision requirements. Alternatively, sensor-imbedded alarm glass can be a practical part of home security, when purchased in coordination with an electronic monitor/surveillance system or alarm device.

Glass Laminate or Safety Film

Safety laminate is an impact-resistant film applied in layers on the surface of the glass in order to achieve greater strength. It can be installed on existing window panes in various thicknesses, and provides basic protection from storm projectiles and accidental damage (e.g. baseballs) as well as additional resistance to “smash and grab” violations. Safety laminate provides a good alternative for remote vacation properties.

Polycarbonate Membranes

High-impact polycarbonate membrane is sold under several different brand names; it is often described as bulletproof, although it is technically bullet resistant. Nonetheless, when sandwiched through glass panels it lends much greater strength to the panes. It is most widely used in commercial, industrial, and institutional applications and is sold through specialty suppliers.

Be Clear About Safety and Security

Be sure to carefully compare features when you shop for window security products. Many reputable manufacturers offer a wide range of special features, such as inaccessible hinges and screw heads, pin locks and ventilation options, not to mention home security systems. Even if you don't feel it's time to replace your windows, consider improving your window security by adding locking mechanisms or alarm features. Whatever your decision, you should adopt responsible, security-conscious habits in order to get the most benefit from your window security features.



Looking Forward, Together

As an investment, real estate has earned a good reputation because of its ability to be forward-looking. When you look ahead, you can actually capitalize on opportunities that exist today. It takes knowledge, skill, and research to get this forecasting right. Plus, it's very important that the analysis is focused on your family's objectives and investment strategy.

Simply put, it's all about watching, waiting, and then acting to your best advantage. By working together, we can identify trends and anticipate changes in the marketplace that will benefit you. So give me a call soon, and let's get together. I look forward to finding genuine real estate opportunities... and the best ways for you to capitalize on them.

If you want market statistics for your area, please call.

**Call Bill Albers today for all your Real Estate needs.
RE/MAX Real Estate (Kamloops)**

258 Seymour Street, Kamloops, BC V2C 2E5

Tel: 250-374-3331

Fax: 250-828-9544

E-mail: billalbers@remax.net